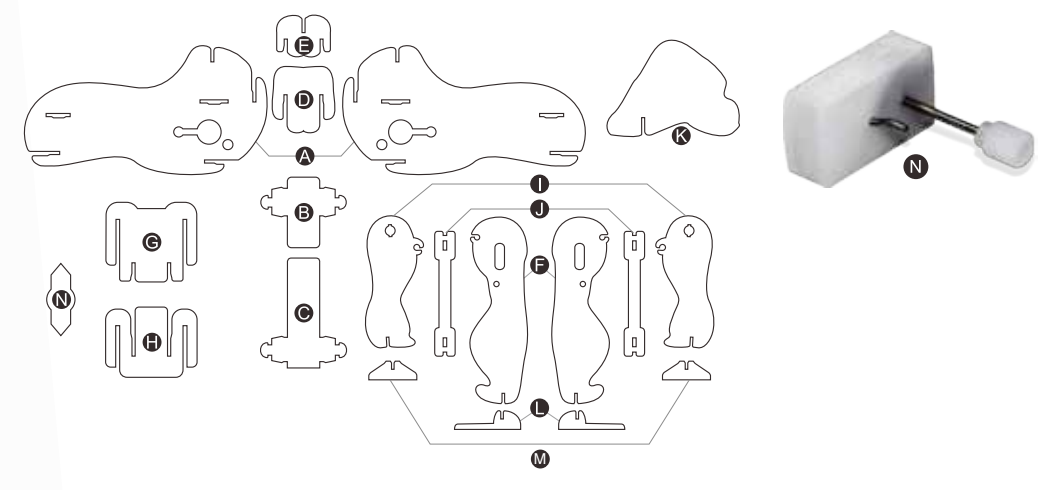




AGES
6+



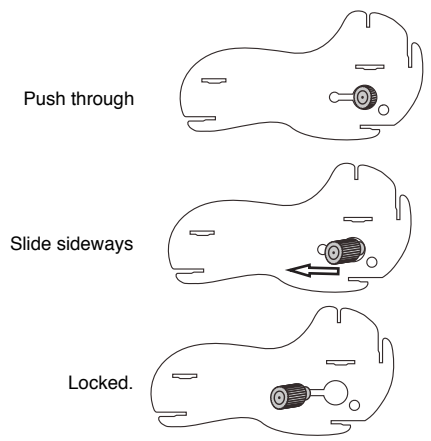
PARTS



Read through this entire instruction manual BEFORE using Gorilla-Matic 3D Wind Up Puzzle.
We're dedicated to bringing you well-designed products that make living fun and easy. We stand behind all our products and warrant this to be free from defects in workmanship and materials for 30 days from the date of purchase.
For service claims or questions please consult our website ProtocolNY.com.

Images may vary from actual product

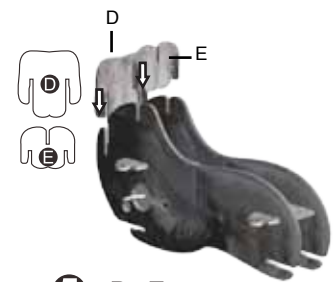
PROTOCOL



3 + N
Secure the motor by sliding it forward into the narrower portion of the cutout.



4 + A



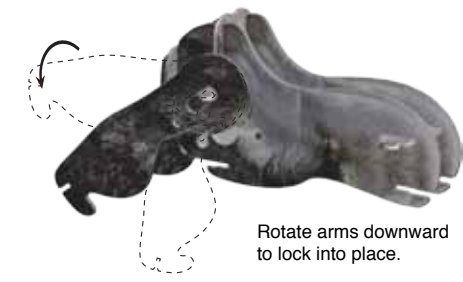
5 + D + E
Slide piece D and E into the two front grooves.



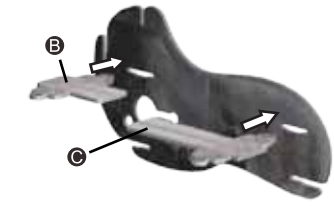
6 + F
Attach arm pieces (F) onto hinge joints. (See next panel for further instruction).

Hold arm horizontally and push onto hinge joint.

Rotate arm downward to lock into place.



Rotate arms downward to lock into place.



1 A+B+C

Attach pieces B and C into one of the larger pieces (A).

Note: Make sure all pieces are pressed in all the way in order to securely interlock and leave room for later pieces.



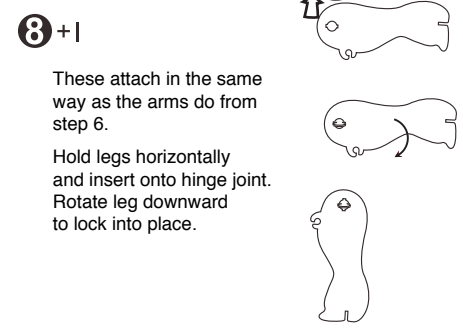
2 + N

Attach motor by guiding the wind-up peg into the large cutout on piece A.



7 + G + H

Slide piece G into the front, and piece H into the back. Make sure the pieces fully interlock.



8 + I

These attach in the same way as the arms do from step 6.
Hold legs horizontally and insert onto hinge joint. Rotate leg downward to lock into place.

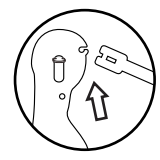


Fig.1

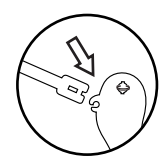


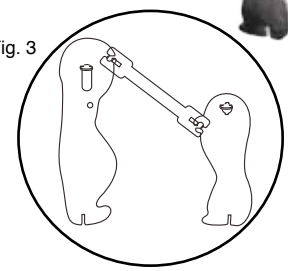
Fig.2

Stabilizers should now be clipped on both ends at a diagonal angle.(Fig. 3)

9 + J

Clip the leg stabilizers onto the shoulder grooves (Fig. 1) and then onto the leg grooves (Fig.2).

Fig. 3



10 + K + L + M



11

Wind motor to walk.

